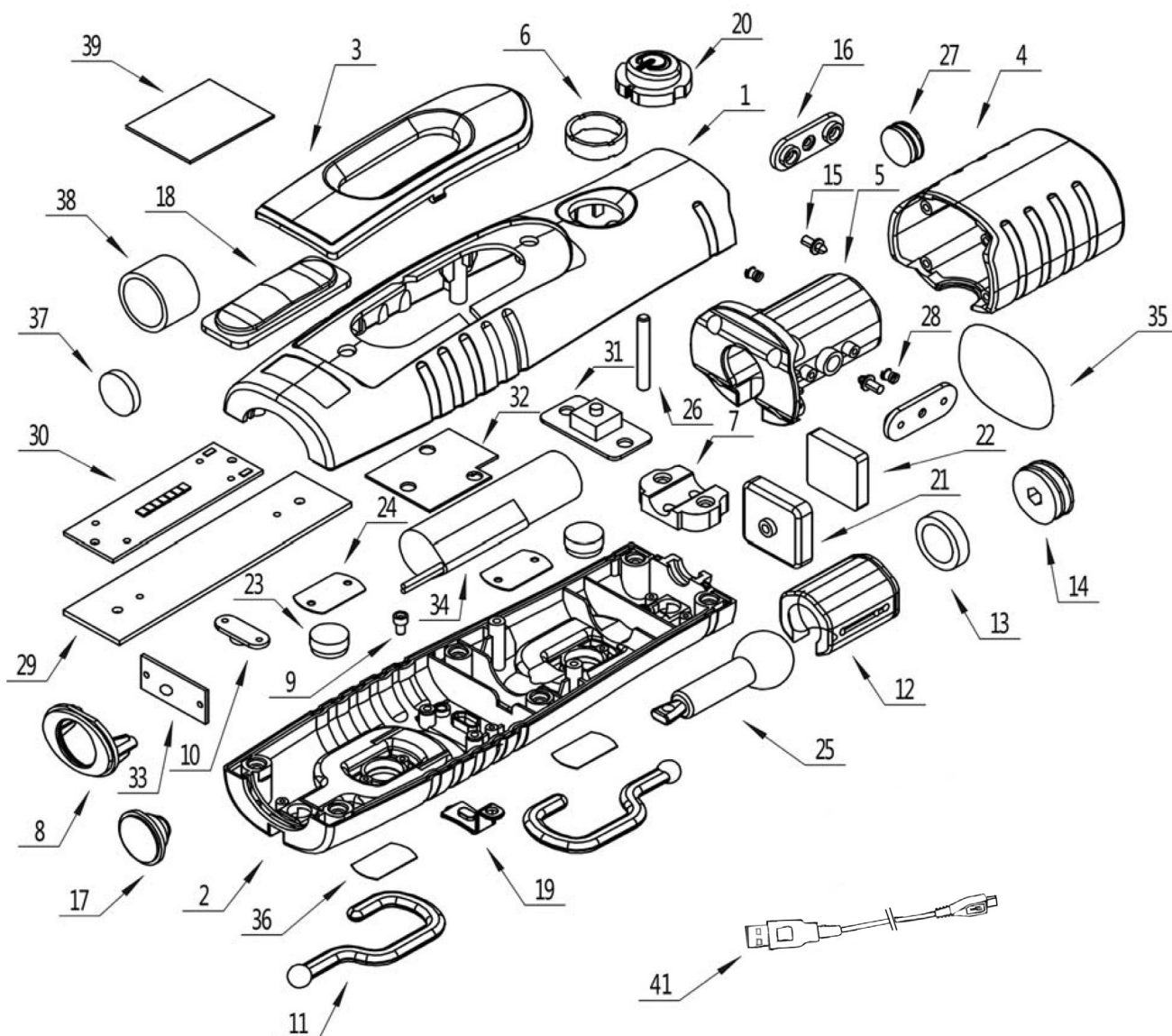


## Parts Information: Rechargeable 360° Inspection Light 4W & 3W SMD LED Model No: LED3602.V3 SERIES



Item	Part No.	Description
1	LED3602.01	Front Housing 'Black' ( <b>LED3602 Only</b> )
--	LED3602G.01	Front Housing 'Green' ( <b>LED3602G Only</b> )
--	LED3602Y.01	Front Housing 'Yellow' ( <b>LED3602Y Only</b> )
--	LED3602R.01	Front Housing 'Red' ( <b>LED3602R Only</b> )
--	LED3602B.01	Front Housing 'Blue' ( <b>LED3602B Only</b> )
--	LED3602CAMO01	Front Housing 'Camouflage' ( <b>LED3602CAMO Only</b> )
--	LED3602BA.01	Front Housing 'Brushed Aluminium' ( <b>LED3602BA Only</b> )
--	LED3602CF.01	Front Housing 'Carbon Fibre' ( <b>LED3602CF Only</b> )

Item	Part No.	Description
2	LED3602.02	Back Housing 'Black' ( <b>LED3602 Only</b> )
--	LED3602G.02	Back Housing 'Green' ( <b>LED3602G Only</b> )
--	LED3602Y.02	Back Housing 'Yellow' ( <b>LED3602Y Only</b> )
--	LED3602R.02	Back Housing 'Red' ( <b>LED3602R Only</b> )
--	LED3602B.02	Back Housing 'Blue' ( <b>LED3602B Only</b> )
--	LED3602CAMO02	Back Housing 'Camouflage' ( <b>LED3602CAMO Only</b> )
--	LED3602BA.02	Back Housing 'Brushed Aluminium' ( <b>LED3602BA Only</b> )
--	LED3602CF.02	Back Housing 'Carbon Fibre' ( <b>LED3602CF Only</b> )

**NOTE:** It is our policy to continually improve products and as such we reserve the right to alter data, specifications and component parts without prior notice. There may be alternative versions of this product, please contact us should you require this information.

**IMPORTANT:** No liability is accepted for incorrect use of product. Spare parts must be fitted by a competent person

**WARRANTY:** Guarantee is 12 months from purchase date, proof of which will be required for any claim.

Jack Sealey Ltd t/a Sealey Group, Kempson Way, Suffolk Business Park, Bury St Edmunds, Suffolk, IP32 7AR UK

Jack Sealey (EU) Ltd t/a Sealey Group, Farney Street, Carrickmacross, Co. Monaghan, A81 PK68 Ireland

Tel: 01284 757500 • Email: sales@sealey.co.uk • Web: www.sealey.co.uk



TM

Parts Information:  
**Rechargeable 360° Inspection Light 4W &  
3W SMD LED**  
**Model No: LED3602.V3 SERIES**

Item	Part No.	Description
3	LED3602G.03	Cover for Front Housing 'Silver'
4	LED3602.04	Handle 'Black' ( <b>LED3602 Only</b> )
--	LED3602G.04	Handle 'Green' ( <b>LED3602G Only</b> )
--	LED3602Y.04	Handle 'Yellow' ( <b>LED3602Y Only</b> )
--	LED3602R.04	Handle 'Red' ( <b>LED3602R Only</b> )
--	LED3602B.04	Handle 'Blue' ( <b>LED3602B Only</b> )
--	LED3602CAMO04	Handle 'Camouflage' ( <b>LED3602CAMO Only</b> )
--	LED3602BA.04	Handle 'Brushed Aluminium' ( <b>LED3602BA Only</b> )
--	LED3602CF.04	Handle 'Carbon Fibre' ( <b>LED3602CF Only</b> )
5	LED3602G.05	Pivot Box, Large
6	LED3602G.06	Support Cap for Press Button Switch
7	LED3602G.07	Ball Arm Plate
8	LED3602G.08	Head Lens Cover
9	LED3602G.09	Charging Indicator Cap
10	LED3602G.10	Hook Plate
11	LED3602G.11	Hook
12	LED3602G.12	Rotating Support, Small
13	LED3602G.13	Pivot Protection Ring
14	LED3602G.14	Pivot Protection Ring
15	LED3602G.15	Rotating Support Pin
16	LED3602G.16	Rotating Support Bar
17	LED3602G.17	Head Led Lens
18	LED3602G.18	SMD Lens

Item	Part No.	Description
19	LED3602G.19	Charging Socket Cover
20	LED3602G.20	Cap for Press Button Switch
22	LED3601G.21	Bottom Magnet (c/w magnet housing)
23	LED3602G.23	Housing Magnet
24	LED3602G.24	Magnet Cover
25	LED3602G.25	Pivot
26	LED3602G.26	Support for Press Button Switch
27	LED3602G.27	Wave Spring
28	LED3602G.28	Spring
29	LED3602G.29	PCB Support Plate
30	LED3602G.30	PCB, Circuit Board, 75 SMD PCB 38 x 24mm
31	LED3602G.31	Switch, On/Off Press Button (c/w PCB)
32	LED3602V3.32	PCB, Circuit Board, 40 x 30mm
33	LED3602G.33	PCB, Circuit Board, Head LED, 30 x 15mm
34	LED3602G.34	Battery Li-Ion 3.7V 2200mAh 8.14Wh (18 x 65mm)(c/w Connector)
35	LED3602G.35	Sticker
36	LED3602G.36	Sticker
37	LED3602G.37	Battery Protection Foam
38	LED3602G.38	Battery Protection Foam
39	LED3602G.39	Foam
41	LED3602G.41	USB Cable, (USB - Micro USB) 920mm

**NOTE:** It is our policy to continually improve products and as such we reserve the right to alter data, specifications and component parts without prior notice. There may be alternative versions of this product, please contact us should you require this information.

**IMPORTANT:** No liability is accepted for incorrect use of product. Spare parts must be fitted by a competent person

**WARRANTY:** Guarantee is 12 months from purchase date, proof of which will be required for any claim.

**Jack Sealey Ltd t/a Sealey Group**, Kempson Way, Suffolk Business Park, Bury St Edmunds, Suffolk, IP32 7AR UK  
**Jack Sealey (EU) Ltd t/a Sealey Group**, Farney Street, Carrickmacross, Co. Monaghan, A81 PK68 Ireland  
**Tel:** 01284 757500 • **Email:** sales@sealey.co.uk • **Web:** www.sealey.co.uk